

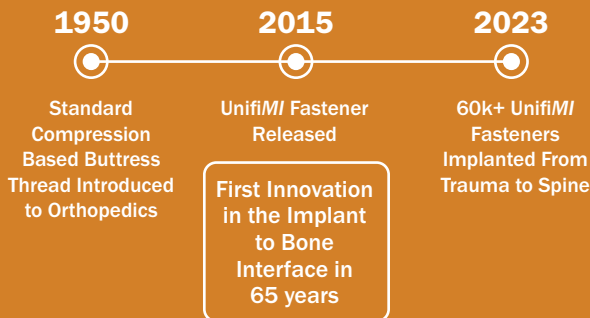
UnifiMI

An **OsteoCentric** Technology

Inspired by Aerospace; Transforming Orthopedics

OsteoCentric Technologies is leading an industry wide, global revolution by developing new, MIS techniques, instruments, and implants that go beyond soft tissues and focuses on preparing and preserving bone.

History

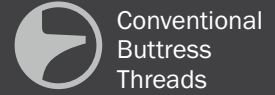


Trusted & Adopted In:

- Spine
- SI Joint
- Trauma
- Sports Medicine
- Extremities
- Veterinary

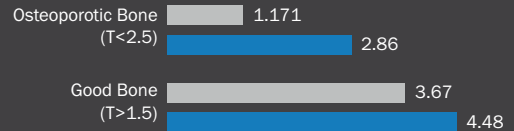
80+
Level 1 Trauma Centers

8+
Years of Proven Performance



Bone Preserving

~67% Increase in Torsional Resistance (Stripping)
- Journal of Orthopedic Trauma



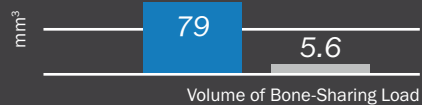
Circumferential Interlocking

58% Increase in Implant Off-Axis Stability

Thread Mechanically Integrates and Preserves Bone Architecture and Biology

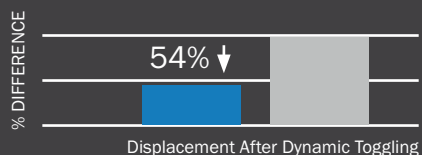
Immediate Load Sharing

14.1x Greater FEA bone engagement in the distal 50% of implant



Sustainable Stability

54% Less displacement after dynamic toggling
- Mercer University



What is Mechanical Integration?

Mechanical Integration (MI) is a minimally invasive, bone preserving method that instantly secures and stabilizes implants to normal or compromised bone by creating a structural and functional connection, utilizing a unique thread geometry that circumferentially interlocks with the bone.

Core Principles



Preserves Architecture & Biology of Bone



Instantly Interlocks Implant to Bone Circumferentially



Immediate & Long-Term Load Sharing Between Implant & Bone



Performance Capabilities of the Bone to Implant Interface

Traditional Compression/
Wedge Interface

Modern Mechanical Integration Interface

Preserves Architecture & Biology of the Bone



Instantly Interlocks the Implant to Bone Circumferentially



Immediate Load Sharing Similar to Osseointegration



Preserves Primary Implant Stability



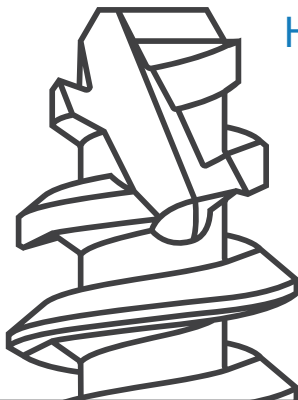
Tension Side of Implant Capable of Resisting Loads



Easily Removable



Affordable



How does UnifiMI Prepare and Preserve Bone?

UnifiMI implants incorporate proprietary self-tapping technology to advance bone chips forward to create a clean bone implant interface maintaining the health of the patient's bone.

Learn more about UnifiMI and Mechanical Integration by watching this video



75 West 300 N, Suite 150
Logan UT, 84321
Phone: 1-800-969-0639
info@osteocentric.com
osteocentric.com

OsteoCentric Trauma, OsteoCentric SI Fusion, OsteoCentric Extremities, OsteoCentric Spine, OsteoCentric Sports Medicine, OsteoCentric Recon, OsteoCentric Dental, OsteoCentric Oncology, and OsteoCentric Vet are a family of the companies under the OsteoCentric brand and are under common ownership and control within OsteoCentric Technologies.

OT-GEN-LBL-0001 Rev 01