

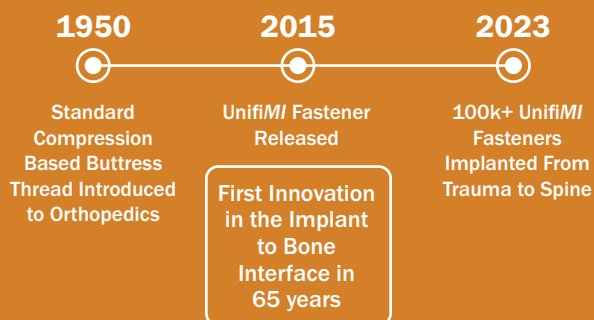
UnifiMI[®]

An **OsteoCentric**
Technology

Inspired by Aerospace; Transforming Orthopedics

OsteoCentric Technologies is leading an industry wide, global revolution by developing new, MIS techniques, instruments, and implants that go beyond soft tissues and focuses on preparing and preserving bone.

Evolution of Interface



Trusted & Adopted In:

- Spine
- SI Joint
- Trauma
- Sports Medicine
- Extremities
- Veterinary

100+

Level 1
Trauma Centers

7+

Years of Proven
Performance



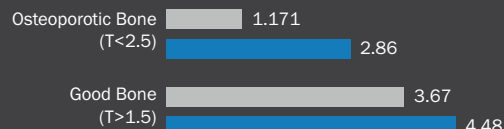
UnifiMI
Interface



Legacy
Interface

Bone Preserving¹

~67% Increase in Torsional
Resistance (Stripping)
- Journal of Orthopedic Trauma



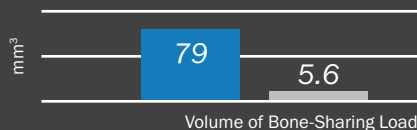
Circumferential Interlocking¹

58% Increase
in Implant Off-Axis
Stability

Thread Mechanically Integrates
and Preserves Bone Architecture
and Biology

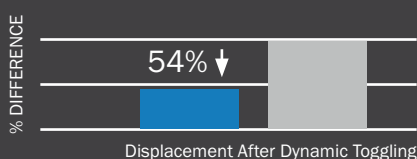
Immediate Load Sharing¹

14.1x Greater FEA bone
engagement in the
distal 50% of implant



Sustainable Stability¹

54% Less displacement
after dynamic toggling
- Mercer University



What is Mechanical Integration?

Mechanical Integration (MI) is a minimally invasive, bone preserving method that instantly secures and stabilizes implants to normal or compromised bone by creating a structural and functional connection, utilizing a unique thread geometry that circumferentially interlocks with the bone.

Core Principles



Preserve the architecture of the patient's bone during implant insertion



Sustain primary implant stability over time



Leverage MIS technology to accelerate the patient's healing journey



Performance Capabilities of the Bone to Implant Interface

Traditional
Compression/
Wedge Interface

Modern
Mechanical
Integration
Interface

Preserves Architecture & Biology of the Bone

X

✓

Instantly Interlocks the Implant to Bone Circumferentially

X

✓

Immediate Load Sharing Similar to Osseointegration

X

✓

Preserves Primary Implant Stability

X

✓

Tension Side of Implant Capable of Resisting Loads

X

✓

Easily Removable

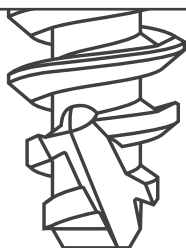
✓

✓

Affordable

✓

✓



How does UnifiMI Prepare and Preserve Bone?

UnifiMI implants incorporate proprietary self-tapping technology to advance bone chips forward to create a clean bone implant interface maintaining the health of the patient's bone.

1. OsteoCentric testing data on file and numbers reflect specific tests in various medium and are not meant to reflect generic claims for improved performance across all clinical applications. Approved conditionally and non-product specific.



Learn more about UnifiMI and Mechanical Integration by watching this video



75 West 300 N, Suite 150
Logan UT, 84321
Phone: 1-800-969-0639
info@osteocentric.com
osteocentric.com

OsteoCentric Trauma, LLC; OsteoCentric SI Fusion, LLC; OsteoCentric Extremities, LLC; OsteoCentric Spine, LLC; OsteoCentric Sports LLC; OsteoCentric Recon, LLC; OsteoCentric Dental, LLC; OsteoCentric Oncology, LLC; and OsteoCentric Vet, LLC; are a family of the companies under the OsteoCentric brand and are under common ownership or common corporate control within OsteoCentric Technologies, Inc.

OT-GEN-LBL-0001 Rev 04